

Single 2-Input OR Gate

General Description

The ET74AUP1G32 is a single 2-input OR Gate, which can operate from a 0.8V to 3.6V supply. This device is fabricated with advanced CMOS technology to achieve ultra-high speed with high output drive.

Features

- Designed for 0.8V to 3.6V V_{CC} Operation
- $\pm 4\text{mA}$ Balanced Output Sink and Source Capability
- Near Zero Static Supply Current Substantially Reduces System Power Requirements
- These Devices are Pb-Free and RoHS Compliant
- ESD Protection Complies with JESD22 Standard
 - HBM: $\pm 4000\text{V}$ Pass (JEDEC JS-001)
 - CDM: $\pm 1000\text{V}$ Pass (JEDEC JS-002)
- Latch-up Performance Exceeds $\pm 100\text{mA}$ per JEDEC JESD78F
- Part No. and Package Information

Part No.	Package	Packing Option	MSL
ET74AUP1G32	SC70-5 (1.3mm \times 2.1mm)	Tape and Reel, 3K/Reel	1
ET74AUP1G32Y	DFN6 (1.0mm \times 1.5mm)	Tape and Reel, 3K/Reel	1
ET74AUP1G32N	DFN6 (1.0mm \times 1.0mm)	Tape and Reel, 5K/Reel	1
ET74AUP1G32N1	DFN6 (1.0mm \times 1.0mm)	Tape and Reel, 5K/Reel	1

ET74AUP1G32

Pin Configuration

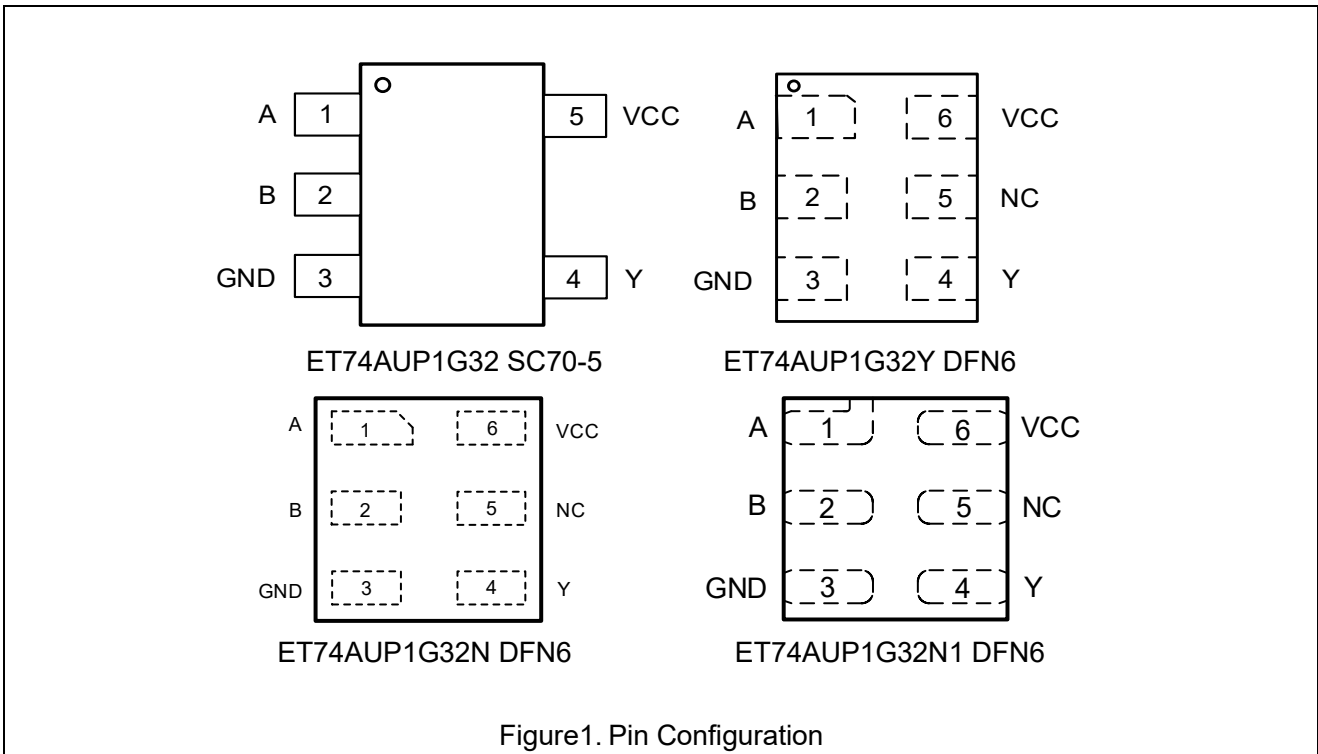


Figure1. Pin Configuration

Pin Function

Pin No.		Pin Name	Function
SC70-5	DFN6		
1	1	A	Input A
2	2	B	Input B
3	3	GND	Ground
4	4	Y	Output Y
/	5	NC	No Connect
5	6	VCC	Supply Voltage

Block Diagram

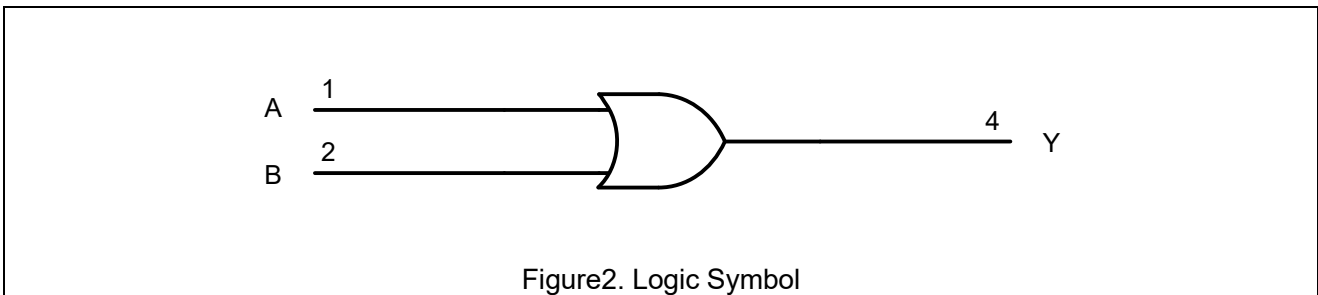


Figure2. Logic Symbol

ET74AUP1G32

Function Table

Input		Output
A	B	Y
L	L	L
L	H	H
H	L	H
H	H	H

Absolute Maximum Ratings

Symbol	Parameter	Value	Unit
V _{CC}	DC Supply Voltage (VCC Pin)	-0.5 to 4.6	V
V _I	DC Input Voltage ⁽¹⁾	-0.5 ≤ V _I ≤ 4.6	V
V _O	DC Output Voltage Output in Higher or Low State	-0.5 to 4.6	V
I _{IK}	DC Input Diode Current, V _I < GND	-50	mA
I _{OK}	DC Output Diode Current, V _O < GND, V _O > V _{CC}	±50	mA
I _O	DC Output Sink Current	±20	mA
I _{CC}	DC Supply Current Per Supply Pin	+50	mA
I _{GND}	DC Ground Current Per Supply Pin	-50	mA
T _{STG}	Storage Temperature Range	-65 to 150	°C
T _L	Lead Temperature, Soldering 10 Seconds	260	°C
T _J	Max Junction Temperature	150	°C
V _{ESD}	ESD Classification	Human Body Model ⁽²⁾	±4000
		Charged Device Model ⁽³⁾	±1000
I _{LU}	Latch Up Current Above V _{CC} and GND at 125°C ⁽⁴⁾	±100	mA

Stresses exceeding those listed in this table may damage the device. If any of these limits are exceeded, device functionality should not be assumed, damage may occur and reliability may be affected.

Note1: I_O absolute maximum rating must be observed.

Note2: HBM tested per JEDEC JS-001.

Note3: CDM tested per JEDEC JS-002.

Note4: Latch up Current Maximum Rating tested per JEDEC JESD78F.

ET74AUP1G32

Thermal Characteristics

Symbol	Package	Ratings	Value	Unit
R _{θJA}	SC70-5	Thermal Characteristics, Thermal Resistance, Junction-to-Air	300	°C/W
	DFN6 (1mm × 1.5mm)		440	
	DFN6 (1mm × 1mm)		440	
R _{θJB}	SC70-5	Thermal Characteristics, Thermal Resistance, Junction-to-board	75	°C/W
	DFN6 (1mm × 1.5mm)		270	
	DFN6 (1mm × 1mm)		285	
P _D	SC70-5	Power Dissipation in Still Air at 85°C	215	mW
	DFN6 (1mm × 1.5mm)		260	
	DFN6 (1mm × 1mm)		150	

Recommended Operating Conditions

Symbol	Parameter	Min	Max	Unit
V _{CC}	DC Supply Voltage Operating	0.8	3.6	V
V _I	DC Input Voltage	0	V _{CC}	V
V _O	DC Output Voltage (High or Low State)	0	V _{CC}	V
T _A	Operating Temperature Range	-40	125	°C
t _r , t _f	Input Rise and Fall Time	V _{CC} = 0.8V to 3.6V		ns/V

Functional operation above the stresses listed in the Recommended Operating Ranges is not implied.

ET74AUP1G32

Electrical Characteristics

DC Electrical Characteristics

Symbol	Parameter	Condition	V _{CC} (V)	T _A = 25°C			-40°C ≤ T _A ≤ 125°C		Unit
				Min	Typ	Max	Min	Max	
V _{IH}	High-Level Input Voltage		0.8	0.75V _{CC}			0.75V _{CC}		V
			0.9~1.95	0.7V _{CC}			0.7V _{CC}		
			2.3~2.7	1.6			1.6		
			3.0~3.6	2.0			2.0		
V _{IL}	Low-Level Input Voltage		0.8			0.25V _{CC}		0.25V _{CC}	V
			0.9~1.95			0.3V _{CC}		0.3V _{CC}	
			2.3~2.7			0.7		0.7	
			3.0~3.6			0.9		0.9	
V _{OH}	High-Level Output Voltage	I _{OH} = -20uA	0.8~3.6	V _{CC} - 0.1			V _{CC} - 0.1		V
		I _{OH} = -1.1mA	1.1	0.82	1.02		0.77		
		I _{OH} = -1.7mA	1.4	1.11	1.32		1.03		
		I _{OH} = -1.9mA	1.65	1.32	1.58		1.30		
		I _{OH} = -2.3mA	2.3	2.05	2.24		1.97		
		I _{OH} = -3.1mA		1.9	2.22		1.85		
		I _{OH} = -2.7mA	3.0	2.72	2.95		2.67		
		I _{OH} = -4.0mA		2.6	2.92		2.55		
V _{OL}	Low-Level Output Voltage	I _{OL} = 20uA	0.8~3.6			0.1		0.1	V
		I _{OL} = 1.1mA	1.1		0.11	0.33		0.33	
		I _{OL} = 1.7mA	1.4		0.12	0.31		0.37	
		I _{OL} = 1.9mA	1.65		0.11	0.31		0.35	
		I _{OL} = 2.3mA	2.3		0.14	0.31		0.33	
		I _{OL} = 3.1mA			0.19	0.44		0.45	
		I _{OL} = 2.7mA	3.0		0.11	0.31		0.33	
		I _{OL} = 4.0mA			0.16	0.44		0.45	
I _{IN}	Input Leakage Current	V _I = V _{CC} or GND	0~3.6			±0.1		±1.0	uA
I _{OFF}	Power Off Leakage Current	V _I = 3.6V or V _O = 3.6V	0			±0.2		±1.0	uA
ΔI _{OFF}	Additional Power Off Leakage Current	V _I or V _O = 0V~3.6V	0~0.2			±0.2		±1.2	uA

ET74AUP1G32

DC Electrical Characteristics

Symbol	Parameter	Condition	V _{CC} (V)	T _A = 25°C			-40°C ≤ T _A ≤ 125°C		Unit
				Min	Typ	Max	Min	Max	
I _{CC}	Quiescent Supply Current	V _I = 3.6V or GND	3.6			±0.2		±3.0	uA
ΔI _{CC}	Additional Quiescent Supply Current	V _I = 2.7V	3.3			60		90	uA

Product parametric performance is indicated in the Electrical Characteristics for the listed test conditions, unless otherwise noted. Product performance may not be indicated by the Electrical Characteristics if operated under different conditions.

AC Electrical Characteristics

t_r = t_f = 3ns

Symbol	Parameter	Condition	V _{CC} (V)	T _A = 25°C			-40°C ≤ T _A ≤ 125°C		Unit
				Min	Typ	Max	Min	Max	
t _{PLH} t _{PHL}	Propagation Delay (Figure3 and 4)	C _L = 15pF ⁽⁵⁾	0.8	14.5	33.9	127	12.8	352	ns
			1.2	5.5	9.5	19.3	5.1	22.5	
			1.5	3.8	6.0	11.8	3.3	16.2	
			1.8	3.0	4.5	8.9	2.6	13.2	
			2.5	2.1	3.0	6.3	1.8	10.3	
			3.3	1.7	2.3	5.3	1.4	9.0	
		C _L = 30pF ⁽⁵⁾	0.8	17.6	34.3	133	15.5	382	ns
			1.2	6.7	11.3	22.2	6.2	23.5	
			1.5	4.6	7.2	13.6	4.0	17.3	
			1.8	3.6	5.4	10.2	3.1	14.7	
			2.5	2.5	3.6	7.3	2.2	11.4	
			3.3	2.0	2.8	6.0	1.7	9.9	

Note5: C_L includes probe and jig capacitance.

ET74AUP1G32

Capacitance Characteristics

Symbol	Parameter	Condition	Typ	Unit	
C _{IN}	Input Capacitance	V _{CC} = 3.6V, V _I = 0V or V _{CC}	2	pF	
C _O	Output Capacitance	V _{CC} = 0V, V _O = GND	3	pF	
C _{PD}	Power Dissipation Capacitance ⁽⁶⁾	10MHz, V _I = 0V to V _{CC}	V _{CC} = 0.8V	7.6	pF
			V _{CC} = 1.2V	8.1	
			V _{CC} = 1.5V	8.5	
			V _{CC} = 1.8V	8.6	
			V _{CC} = 2.5V	9.0	
			V _{CC} = 3.3V	9.6	

Note6: C_{PD} is used to determine the dynamic power dissipation (P_D in μW).

$$P_D = C_{PD} \times V_{CC}^2 \times f_i \times N + \Sigma(C_L \times V_{CC}^2 \times f_o) \text{ where:}$$

f_i = input frequency in MHz;

f_o = output frequency in MHz;

C_L = output load capacitance in pF;

V_{CC} = supply voltage in V;

N = number of inputs switching;

Σ(C_L × V_{CC}² × f_o) = sum of outputs.

AC Test Circuit

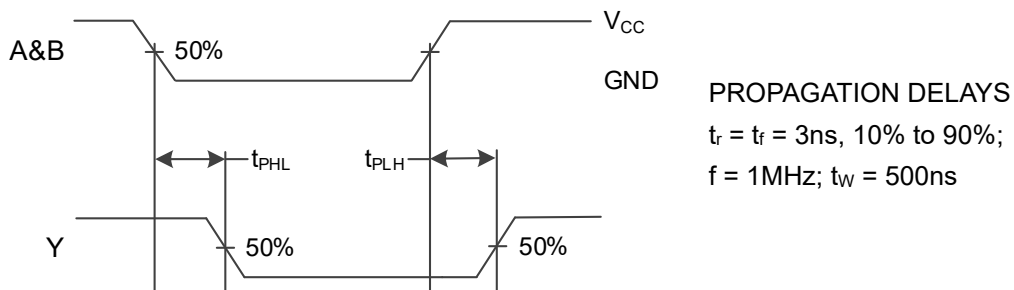


Figure3. Switching Waveform

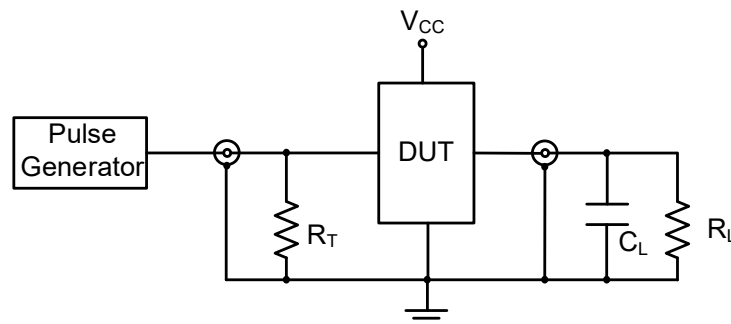
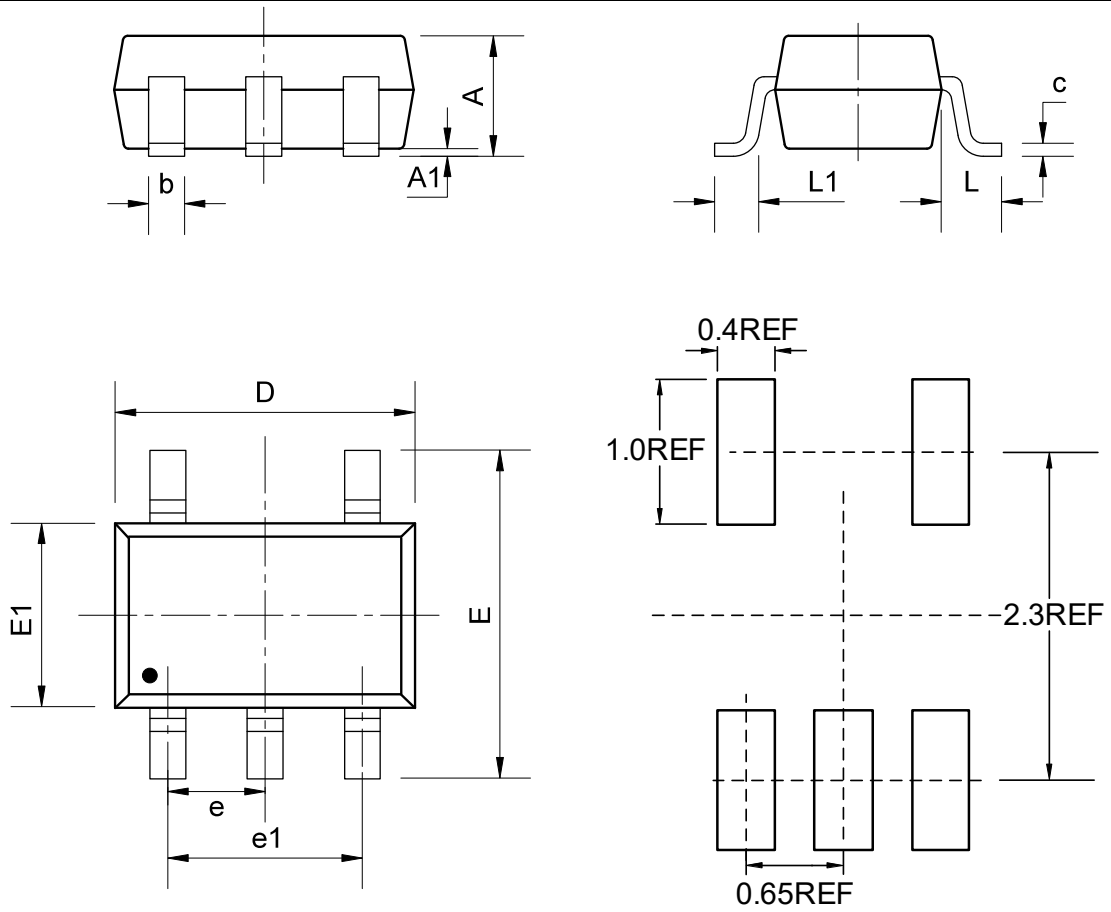


Figure4. Test Circuit R_T = 50Ω(Typ)

ET74AUP1G32

Package Dimension

SC70-5 (1.3mm × 2.1mm)



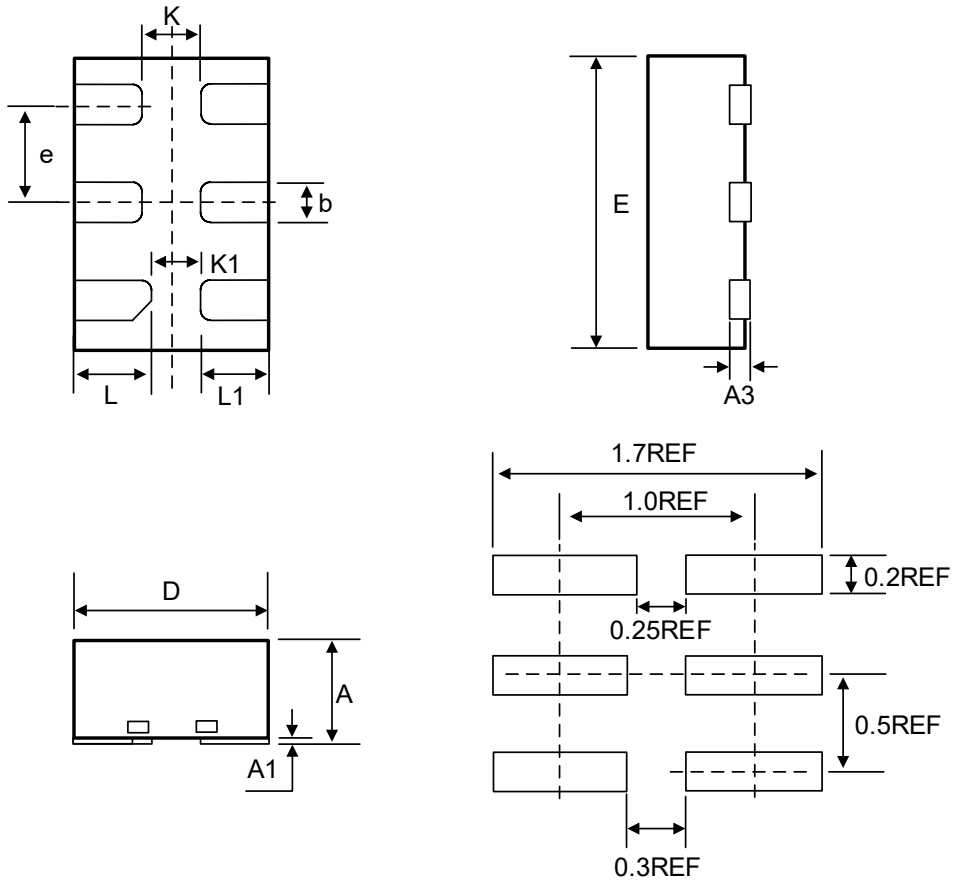
COMMON DIMENSIONS

(Unit: mm)

SYMBOL	MIN	NOM	MAX
A	-	-	1.10
A1	0.00	-	0.15
b	0.15	-	0.35
c	0.08	-	0.20
D	2.00	2.10	2.30
e	0.65BSC		
e1	1.30BSC		
E	2.15	2.30	2.50
E1	1.15	1.30	1.45
L	0.50REF		
L1	0.33REF		

ET74AUP1G32

DFN6 (1.0mm × 1.5mm)



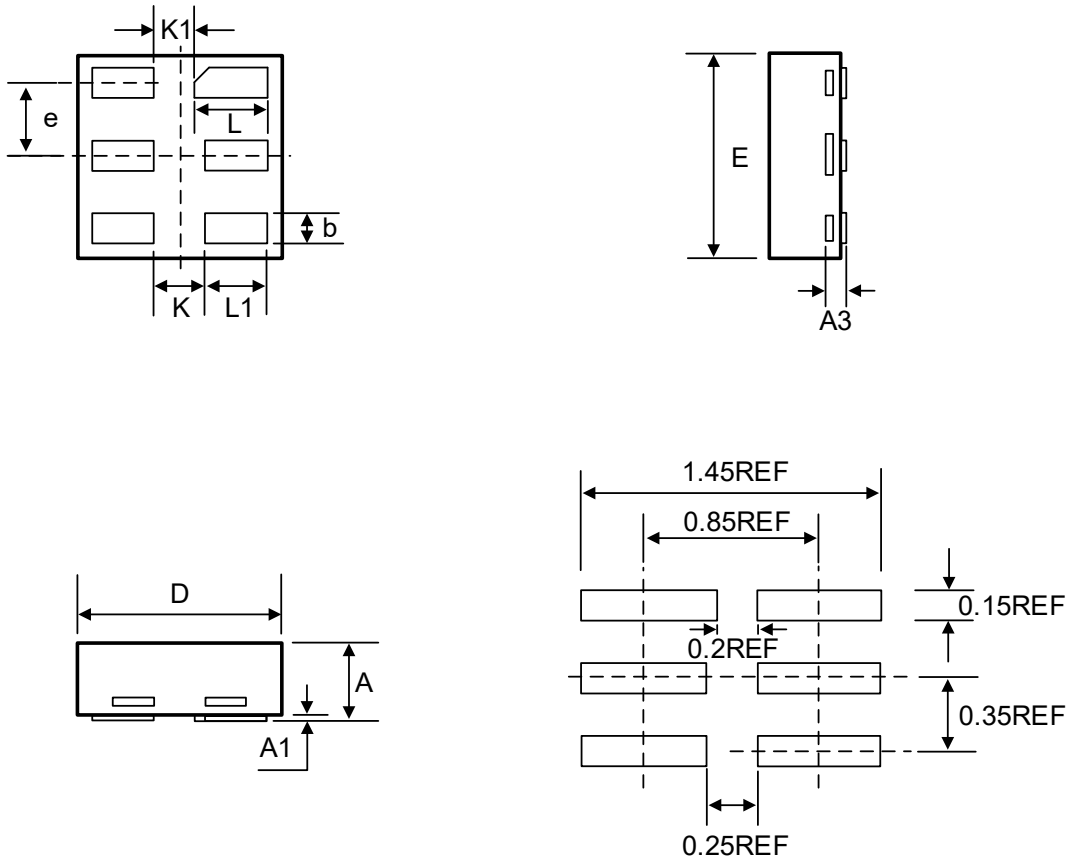
COMMON DIMENSIONS

(Unit: mm)

SYMBOL	MIN	NOM	MAX
A	0.50	--	0.60
A1	0.00	0.02	0.05
A3	0.10REF		
b	0.15	0.20	0.25
D	0.90	1.00	1.10
E	1.40	1.50	1.60
e	0.50BSC		
K	0.30REF		
K1	0.25REF		
L	0.35	0.40	0.45
L1	0.30	0.35	0.40

ET74AUP1G32

DFN6 (1mm × 1mm) N



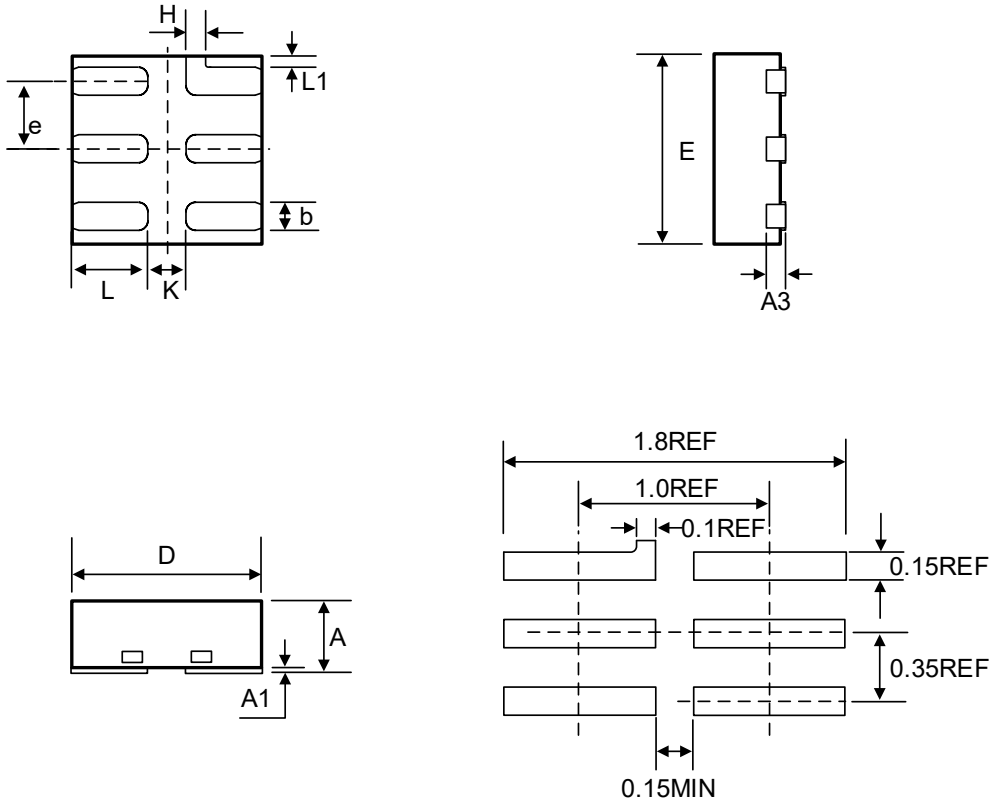
COMMON DIMENSIONS

(Unit: mm)

SYMBOL	MIN	NOM	MAX
A	0.50	0.55	0.60
A1	0	0.02	0.05
A3	0.10REF		
b	0.10	0.15	0.20
D	0.95	1.00	1.05
E	0.95	1.00	1.05
e	0.30	0.35	0.40
K	0.25REF		
K1	0.20REF		
L	0.30	0.35	0.40
L1	0.25	0.30	0.35

ET74AUP1G32

DFN6 (1mm × 1mm) N1



COMMON DIMENSIONS

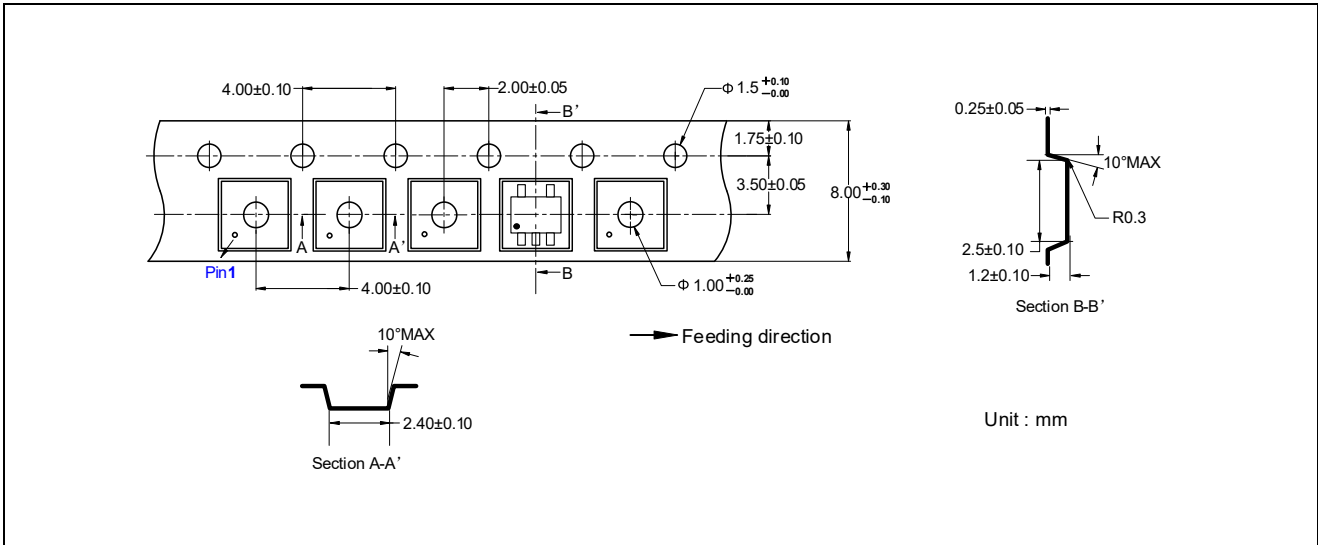
(Unit: mm)

SYMBOL	MIN	NOM	MAX
A	0.34	0.37	0.40
A1	0.00	0.02	0.05
A3	0.10REF		
b	0.10	0.15	0.20
D	0.95	1.00	1.05
E	0.95	1.00	1.05
e	0.30	0.35	0.40
H	0.10REF		
K	0.15	--	--
L	0.35	0.40	0.45
L1	0.075REF		

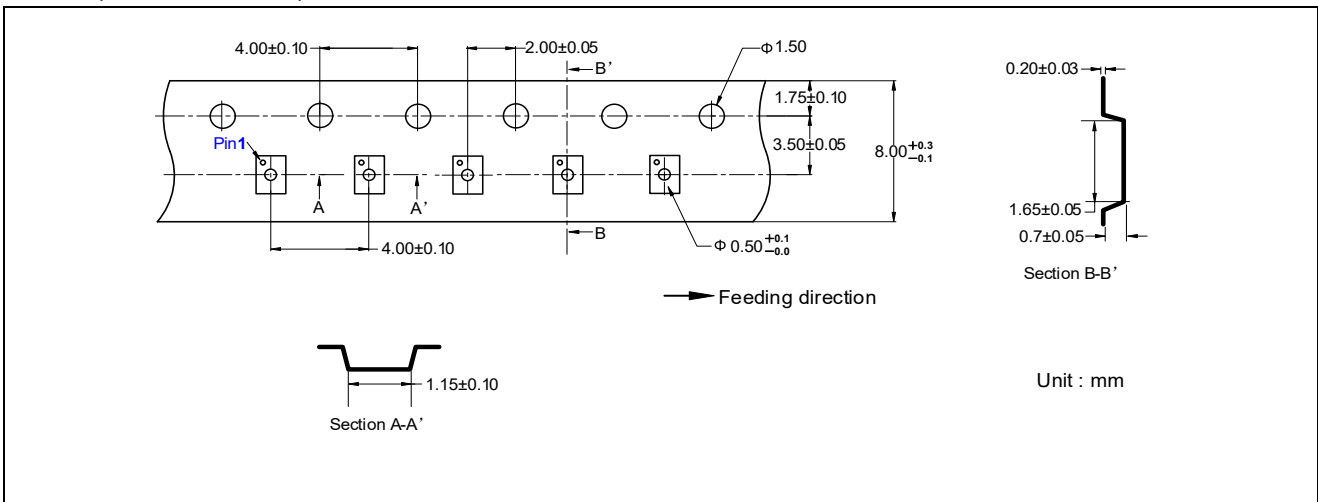
ET74AUP1G32

Tape Information

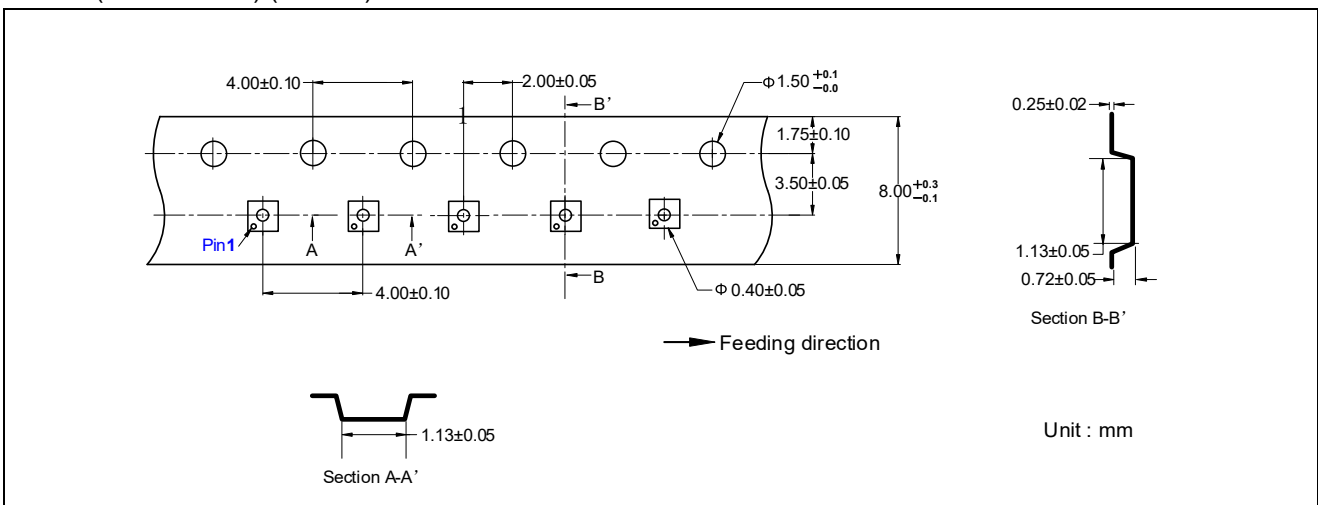
SC70-6 (1.3mm × 2.1mm)



DFN6 (1.0mm × 1.5mm)

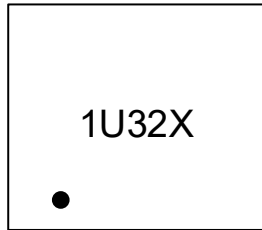


DFN6 (1mm × 1mm) (N & N1)

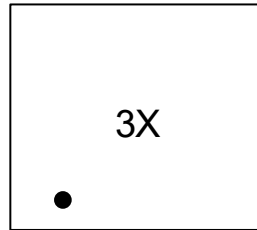


ET74AUP1G32

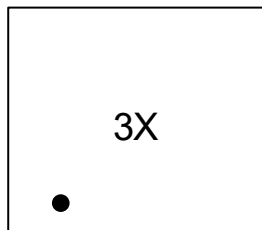
Marking Information



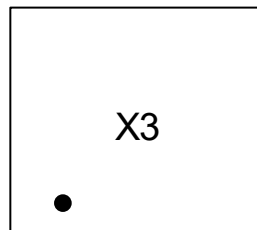
ET74AUP1G32
1U32 = Part Number
X = Tracking Number



ET74AUP1G32Y
3 = Part Number
X = Tracking Number



ET74AUP1G32N
3 = Part Number
X = Tracking Number



ET74AUP1G32N1
3 = Part Number
X = Tracking Number

ET74AUP1G32

Revision History and Checking Table

Version	Date	Revision Item	Modifier	Function & Spec Checking	Package & Tape Checking
0.0	2020-04-16	Preliminary Version	Ma yongjian	Ma yongjian	Liu jiaying
0.1	2020-04-28	Update Package Dimension	Ma yongjian	Ma yongjian	Liu jiaying
0.2	2020-05-13	Update Package and Tape	Ma yongjian	Ma yongjian	Liu jiaying
1.0	2020-08-25	Initial Version	Ma yongjian	Ma yongjian	Liu jiaying
1.1	2021-6-7	Add SC70-5 Package	Shi bo	Shi bo	Liu jiaying
1.2	2022-9-7	Update Typeset	Shi bo	Shi bo	Liu jiaying
1.3	2022.11.11	Update Typeset and Thermal Characteristics	Wu han	Shi bo	Zhu junli
1.4	2023-11-29	Update ESD/Tape Picture	Shi bo	Shi bo	Liu jiaying
1.5	2025-05-29	Add Packing Option	Yang xiaoxu	Yang xiaoxu	Liu jiaying
1.5.a	2025-09-19	Update Switching Waveform	Yang xiaoxu	Yang xiaoxu	Liu jiaying
1.6	2025-12-11	Update 125°C Date	Yu yifan	Yang xiaoxu	Liu jiaying
1.6.a	2026-02-02	Update Format, Add Tape and Marking	Xu tao	Yang xiaoxu	Liu jiaying